



ELEMENTS

Outdoor Essentials for Belgard

OUTDOOR KITCHEN
& FIRE PITS

BRING YOUR OUTDOOR VISION TO LIFE WITH BELGARD

Belgard® has been North America's number one brand of pavers and landscape wall products for over 25 years. The only nationwide provider of hardscape products, we have established ourselves as an industry leader and dedicated partner to homeowners and industry professionals alike. With over 20,000 hours each year dedicated to research and development, we are renowned for paving the way with expertise and innovations that guide industry trends. Backed by a national infrastructure of more than 150 operating locations, every town is our town.

Our network of Preferred Partners and Belgard Authorized Contractors are trained to supply superior craftsmanship, and our products set the standard for quality. We proudly stand behind our products with a lifetime transferable limited warranty, giving you the peace of mind to know that your outdoor space will retain its beauty for years to come.

Visit [Belgard.com](https://www.belgard.com) for inspiration, financing options, authorized contractors, warranty information and more!



ELEMENTS PRO 32" BUILT-IN GRILL



☑ FEATURES & BENEFITS

- Commercial Grade Stainless Steel
- Double-Lined Hood
- 8mm Cooking Grates
- Four 14,000 BTU Cast Stainless Steel Burners with Stainless Steel Burner Covers (total 56,000 BTU)
- 15,000 BTU IR Back Burner
- Heat Zone Separators
- External LED Lighting & Interior Cooking Lights
- Flame Thrower Ignition & Manual Flash Tube Ignition
- Custom Fitted, Water-Resistant Cover Available

📦 PACKAGE INFO

	UNIT DIMENSIONS W X D X H	PACKAGE DIMENSIONS W X D X H	PACKAGE WEIGHT (LBS)	CUTOUT DIMENSIONS W X H X D
70585054 - Pro 32" Built-In Grill NG	32½ x 25½ x 20	35½ x 27 x 21½	122	30¾ x 8½ x 20¾
70585055 - Pro 32" Built-In Grill LP	32½ x 25½ x 20	35½ x 27 x 21½	122	30¾ x 8½ x 20¾
70585077 - 32" Built-In Grill Cover	32	13 x 2 x 15	2	N/A

ELEMENTS PRO 40" BUILT-IN GRILL



☑ FEATURES & BENEFITS

- Commercial Grade Stainless Steel
- Double-Lined Hood
- 8mm Cooking Grates
- Five 14,000 BTU Cast Stainless Steel Burners with Stainless Steel Burner Covers (total 70,000 BTU)
- 15,000 BTU IR Back Burner
- Heat Zone Separators
- External LED Lighting & Interior Cooking Lights
- Flame Thrower Ignition & Manual Flash Tube Ignition
- Custom Fitted, Water-Resistant Cover Available

📦 PACKAGE INFO

	UNIT DIMENSIONS W X D X H	PACKAGE DIMENSIONS W X D X H	PACKAGE WEIGHT (LBS)	CUTOUT DIMENSIONS W X H X D
70585056 - Pro 40" Built-In Grill NG	39¾ x 25½ x 20	43 x 27 x 21½	150	37¾ x 8½ x 20¾
70585057 - Pro 40" Built-In Grill LP	39¾ x 25½ x 20	43 x 27 x 21½	150	37¾ x 8½ x 20¾
70585080 - 38/40" Built-In Grill Cover	40	13 x 2 x 15	2	N/A

ELEMENTS BUILT-IN OUTDOOR OVEN



☑ FEATURES & BENEFITS

- Main Burner 16,000 BTU
- Built-In Halogen Cooking Light
- 3 Cooking Racks
- Large Oven Capacity & Food Safe Pizza Stone; Cook up to 16" Pizza
- Electronic Ignition
- Full View Front Window with Temperature Gauge
- Cool Touch Surface & Heat Resistant Handle
- Wood Chip Smoker Box
- CSA Certified
- Custom Fitted, Water-Resistant Cover Available

📦 PACKAGE INFO

	UNIT DIMENSIONS W X D X H	PACKAGE DIMENSIONS W X D X H	PACKAGE WEIGHT (LBS)	CUTOUT DIMENSIONS W X H X D
70585089 - Built-In Outdoor Oven NG	22½ x 25½ x 34½	28½ x 25⅝ x 29½	101	23½ x 6¼ x 20
70585090 - Built-In Outdoor Oven LP	22½ x 25½ x 34½	28½ x 25⅝ x 29½	101	23½ x 6¼ x 20
70585091 - Built-In Outdoor Oven Cover	N/A	14 x 2 x 16	2	N/A

ELEMENTS SINGLE SIDE BURNER



☑ FEATURES & BENEFITS

- Total BTUs: 15,000
- Cooking Surface: 9½ x 9½
- Custom Fitted, Water-Resistant Cover Available

📦 PACKAGE INFO

	UNIT DIMENSIONS W X D X H	PACKAGE DIMENSIONS W X D X H	PACKAGE WEIGHT (LBS)	CUTOUT DIMENSIONS W X H X D
70585066 - Single Side Burner NG	14 x 19½ x 5¾	20½ x 15 x 6½	22	8 x 2½ x 15½
70585067 - Single Side Burner LP	14 x 19½ x 5¾	20½ x 15 x 6½	22	8 x 2½ x 15½
70585087 - Single Side Burner Cover	N/A	10 x 2 x 13	1	N/A

ELEMENTS PRO DOUBLE SIDE BURNER



☑ FEATURES & BENEFITS

- Total BTUs: 24,000
- Cooking Surface: 19½ x 10½
- Custom Fitted, Water-Resistant Cover Available

📦 PACKAGE INFO

	UNIT DIMENSIONS W X D X H	PACKAGE DIMENSIONS W X D X H	PACKAGE WEIGHT (LBS)	CUTOUT DIMENSIONS W X H X D
70585068 - Pro Double Side Burner NG	12⅝ x 25⅝ x 9⅝	27 x 14 x 11½	37	10¾ x 8 x 20¾
70585069 - Pro Double Side Burner LP	12⅝ x 25⅝ x 9⅝	27 x 14 x 11½	37	10¾ x 8 x 20¾
70585088 - Pro Double Side Burner Cover	N/A	10 x 2 x 13	1	N/A

ELEMENTS DOUBLE ACCESS DOORS



✔ FEATURES & BENEFITS

- #304 Stainless Steel
- Double Lined Construction
- Magnetic Latch for Secure Closure
- Handleless

📦 PACKAGE INFO

	UNIT DIMENSIONS W X D X H	PACKAGE DIMENSIONS W X D X H	PACKAGE WEIGHT (LBS)	CUTOUT DIMENSIONS W X H X D
70585078 - Double Access Doors	33 x 22	35¾ x 4½ x 25½	23	30¼ x 19¾ x N/A

ELEMENTS DOUBLE DRAWERS



✔ FEATURES & BENEFITS

- #304 Stainless Steel
- Soft Close Drawers
- Handleless

📦 PACKAGE INFO

	UNIT DIMENSIONS W X D X H	PACKAGE DIMENSIONS W X D X H	PACKAGE WEIGHT (LBS)	CUTOUT DIMENSIONS W X H X D
70585072 - Double Drawers	17 x 20½ x 22	25 x 20½ x 24	50	15¼ x 19¾ x 20¾

ELEMENTS DELUXE COMPACT REFRIGERATOR



✔ FEATURES & BENEFITS

- #304 Stainless Steel Door Construction
- Storage Capacity: 4.5 ft³
- Left and Right Doors Available
- Rear Venting
- Factory Installed Security Lock
- Adjustable Digital Thermostat
- Temperature Range 32° to 50°

📦 PACKAGE INFO

	UNIT DIMENSIONS W X D X H	PACKAGE DIMENSIONS W X D X H	PACKAGE WEIGHT (LBS)	CUTOUT DIMENSIONS W X H X D
70585064 - Deluxe Compact Fridge L	20 x 18 x 32	N/A	N/A	20½ x 33¼ x 20
70585065 - Deluxe Compact Fridge R	20 x 18 x 32	N/A	N/A	20½ x 33¼ x 20

ELEMENTS OUTDOOR DROP-IN SINK



☑ FEATURES & BENEFITS

- Hot & Cold Faucet

📦 PACKAGE INFO

	UNIT DIMENSIONS W X D X H	PACKAGE DIMENSIONS W X D X H	PACKAGE WEIGHT (LBS)	CUTOUT DIMENSIONS W X H X D
70585094 - Outdoor Drop-In Sink	15 x 15	18 x 18 x 10	8	14¼ x 14¼ x 16½

ELEMENTS BEVERAGE & PREP STATION



☑ FEATURES & BENEFITS

- LED Lights
- Sink
- Ice Storage
- 3 Condiment Trays
- Speed Rail
- Towel Holder
- Bottle Opener

📦 PACKAGE INFO

	UNIT DIMENSIONS W X D X H	PACKAGE DIMENSIONS W X D X H	PACKAGE WEIGHT (LBS)	CUTOUT DIMENSIONS W X H X D
70585073 - Beverage & Prep Station	29⅞ x 26⅞ x 11⅞	32½ x 30 x 13	72	28 x 10⅞ x N/A

ELEMENTS FARMHOUSE SINK



☑ FEATURES & BENEFITS

- Fashionable apron front that matches face style of Elements Pro Grill
- Large & deep basin to fit any size pot or pan
- Constructed completely out of stainless steel
- 13" tall sleek metal faucet

📦 PACKAGE INFO


	UNIT DIMENSIONS W X D X H	PACKAGE DIMENSIONS W X D X H	PACKAGE WEIGHT (LBS)	CUTOUT DIMENSIONS W X H X D
70584359 - Farmhouse Sink	32⅞ x 25⅝ x 8	35 x 28 x 14	40	31⅝ x 8½ x 21⅝

ELEMENTS ROTISSERIE KIT

☑ FEATURES & BENEFITS

- Bag Keeps Rotisserie Kit Organized & Protected
- Weather Protected Stainless Steel Motor
- Fork Set
- Counterbalance
- Spit Rod




 PACKAGE INFO	UNIT DIMENSIONS W X D X H	PACKAGE DIMENSIONS W X D X H	PACKAGE WEIGHT (LBS)	CUTOUT DIMENSIONS W X H X D
70585076 - 32" Rotisserie Kit Bag	32	11 x 1 x 15	1	N/A
70585083 - 40" Rotisserie Kit Bag	44	11 x 1 x 15	1	N/A
70585075 - 32" Rotisserie Kit	32	35½ x 6½ x 4½	6	N/A
70585082 - 40" Rotisserie Kit	40	42¾ x 6½ x 4½	7	N/A

ELEMENTS INFRARED SEAR BURNER

☑ FEATURES & BENEFITS

- Can Replace Nearly Any Burner Position
- Gives a Customizable Cooking Experience




 PACKAGE INFO	UNIT DIMENSIONS W X D X H	PACKAGE DIMENSIONS W X D X H	PACKAGE WEIGHT (LBS)	CUTOUT DIMENSIONS W X H X D
70585085 - Infrared Sear Burner	-	17 x 6 x 6	4	N/A

ELEMENTS STAINLESS STEEL SMOKER TRAY

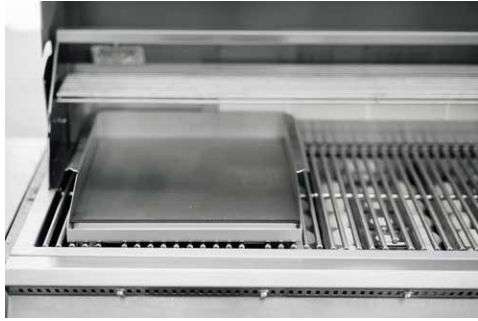
☑ FEATURES & BENEFITS

- Meal Enhancer Allows for Endless Flavor Options



 PACKAGE INFO	UNIT DIMENSIONS W X D X H	PACKAGE DIMENSIONS W X D X H	PACKAGE WEIGHT (LBS)	CUTOUT DIMENSIONS W X H X D
70585086 - Stainless Steel Smoker Tray	N/A	20½ x 5¼ x 2	3	N/A

ELEMENTS GRIDDLE PLATE



☑ FEATURES & BENEFITS

- #304 Stainless Steel
- 212 Square Inch of Grilling Space

📦 PACKAGE INFO

	UNIT DIMENSIONS W X D X H	PACKAGE DIMENSIONS W X D X H	PACKAGE WEIGHT (LBS)	CUTOUT DIMENSIONS W X H X D
70585070 - Griddle Plate	14 x 17½	17½ x 3½ x 22½	14	N/A

ELEMENTS 8PC PIZZA OVEN ACCESSORY KIT



☑ KIT INCLUDES:

- Leather Glove
- Steel Smoker Box
- Stainless Steel Serving Spatula
- 15" x 14" Pizza Stone
- Stainless Steel Cutter/Spatula
- 9" Stainless Steel Wheel Cutter
- Foldable Pizza Paddle
- Stainless Steel Grill Rack

📦 PACKAGE INFO

	UNIT DIMENSIONS W X D X H	PACKAGE DIMENSIONS W X D X H	PACKAGE WEIGHT (LBS)	CUTOUT DIMENSIONS W X H X D
70585093 - Pizza Oven Accessory Kit	N/A	16¾ x 5 x 17½	14	N/A

ELEMENTS GAS TIMER



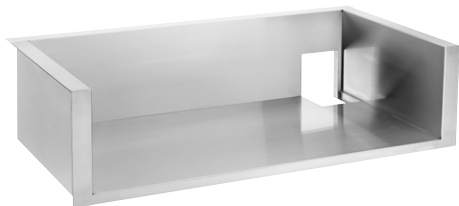
☑ FEATURES & BENEFITS

- 1 Hour Timer with Emergency Shutoff

📦 PACKAGE INFO

	UNIT DIMENSIONS W X D X H	PACKAGE DIMENSIONS W X D X H	PACKAGE WEIGHT (LBS)	CUTOUT DIMENSIONS W X H X D
70585084 - Gas Timer	4 x 4	-	-	N/A

ELEMENTS GRILL LINER



✔ FEATURES & BENEFITS

- #304 Stainless Steel
- Protects Against Combustible Construction
- Heavy Duty Insulation Jacket
- Protects Against Chassis Corrosion
- Double Lined Construction
- Stainless Steel Mounting Bracket

PACKAGE INFO	UNIT DIMENSIONS W X D X H	PACKAGE DIMENSIONS W X D X H	PACKAGE WEIGHT (LBS)	CUTOUT DIMENSIONS W X H X D
70585074 - 32" Grill Liner	34¾ x 22½ x 9½	-	-	33 x 9¾ x 22
70585081 - 40" Grill Liner	42 x 22½ x 9½	-	-	40¾ x 9¾ x 22

ELEMENTS OVEN ISLAND FLANGE KIT



✔ FEATURES & BENEFITS

- Allows the Outdoor Oven to be Built into an Island More Seamlessly
- Made of 14 Gauge, #304 Stainless Steel

PACKAGE INFO	UNIT DIMENSIONS W X D X H	PACKAGE DIMENSIONS W X D X H	PACKAGE WEIGHT (LBS)	CUTOUT DIMENSIONS W X H X D
70585092 - Oven Island Flange Kit	N/A	23 x 6¼ x 2¼	4	N/A

ELEMENTS ISLAND VENT

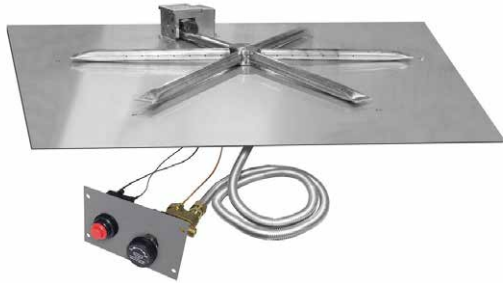


✔ FEATURES & BENEFITS

- #304 Stainless Steel
- Mounts Horizontally or Vertically

PACKAGE INFO	UNIT DIMENSIONS W X D X H	PACKAGE DIMENSIONS W X D X H	PACKAGE WEIGHT (LBS)	CUTOUT DIMENSIONS W X H X D
70585071 - Island Vent	14 x 5	14 x 4½ x 1	1	-

ELEMENTS SQUARE GAS FIRE PIT BURNER KIT



☑ FEATURES & BENEFITS

- 25" Square Flat Stainless Steel Pan
- Stainless Steel 22" Burning Spur
- TMSI Ignition with Spark Ignition, for Natural Gas - 65,000 BTU
- Flexframe Constructed of 16 Gauge 304 Stainless Steel
- Four Stainless Steel Vents
- 30 lb. Bag of 1 to 2" Black Lava Rock

PRODUCT INFO	PACKAGE DIMENSIONS W X D X H	PACKAGE WEIGHT (LBS)	KIT INCLUDES:
70585062 - Square Gas Fire Pit Burner Kit	27 x 27 x 5 <i>(Lava Rock & Flexframe packaged separately)</i>	35	Burner System, Control Panel, Flexframe, Vents, Lava Rock, & LP Conversion kit

ELEMENTS ROUND GAS FIRE PIT BURNER KIT

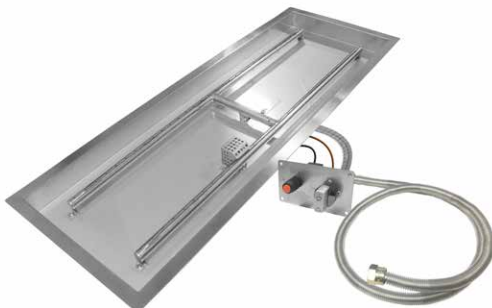


☑ FEATURES & BENEFITS

- 34" Round Stainless Steel Disc
- Stainless Steel 22" Burning Spur
- TMSI Ignition with Spark Ignition, for Natural Gas - 65,000 BTU
- Flexframe Constructed of 16 Gauge 304 Stainless Steel
- Four Stainless Steel Vents
- 40 lb. Bag of 1 to 2" Black Lava Rock

PRODUCT INFO	PACKAGE DIMENSIONS W X D X H	PACKAGE WEIGHT (LBS)	KIT INCLUDES:
70585063 - Round Gas Fire Pit Burner Kit	36 x 36 x 5 <i>(Lava Rock & Flexframe packaged separately)</i>	40	Burner System, Control Panel, Flexframe, Vents, Lava Rock, & LP Conversion kit

ELEMENTS LINEAR GAS FIRE PIT BURNER KIT



☑ FEATURES & BENEFITS

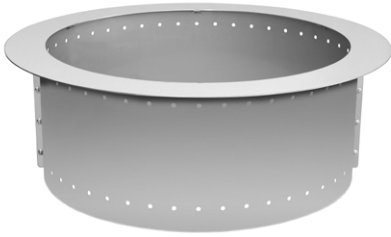
- Stainless Steel "H" Burner: 44" x 10"
- TMSI Piloted Version - Natural Gas - 95,000 BTU
- Liquid Propane (LP) Conversion Kit - Converts fire pit from Natural Gas to LP Gas. Includes: Burner and Pilot Orifice and instructions
- 40 lb. Bag of 1 to 2" Black Lava Rock
- Liquid Propane Quick Disconnect Kit
- Liquid Propane Regulator
- 4 Stainless Steel Vents

PRODUCT INFO	PACKAGE DIMENSIONS W X D X H	PACKAGE WEIGHT (LBS)	KIT INCLUDES:
70585050 - Linear Gas Fire Pit Burner Kit	52 x 18 x 5 <i>(Lava Rock packaged separately)</i>	36	Burner System, Control Panel, Flexframe, Vents, Lava Rock, & LP Conversion Kit

ELEMENTS SMOKE-LESS FIRE PIT INSERT

✔ FEATURES & BENEFITS

- Made out of 100% Commercial Grade Stainless Steel
- Specially designed to burn more efficiently and emit less smoke
- Can retrofit existing wood burning fire pit
- Kit includes Stainless Steel insert & Hardware



📦 PRODUCT INFO

	PACKAGE DIMENSIONS W X D X H	PACKAGE WEIGHT (LBS)	KIT INCLUDES:
70580596 - Smoke-Less Fire Pit Insert	Outer Rim: 34" Inner Rim: 26" Height: 12" Base Outer Diameter: 29" Fits 29½" - 32" internal diameter	21	Stainless Steel insert & Hardware



